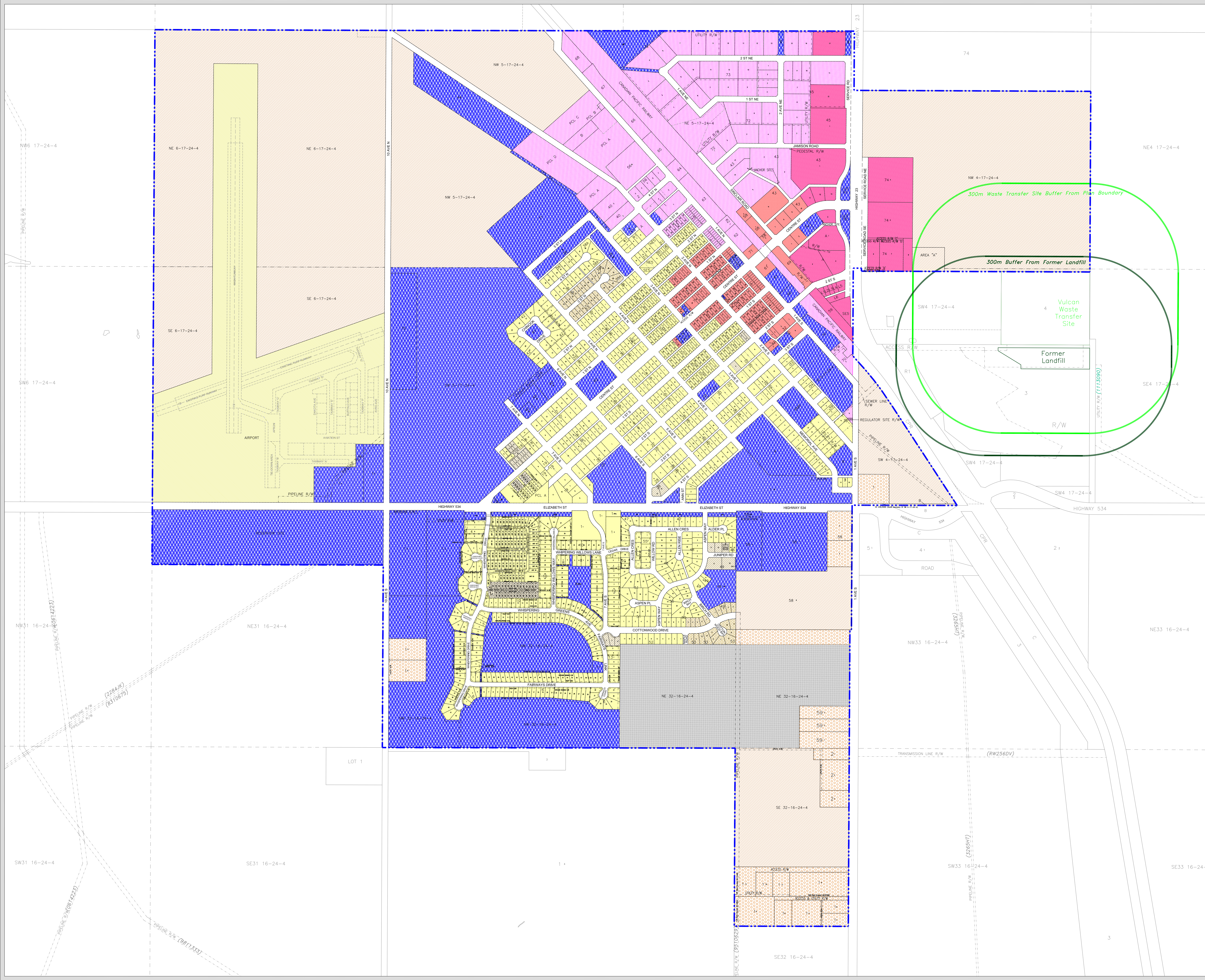


TOWN OF VULCAN
 NE 32, NW 32, SE 32, Ptn NE 31
 In Twp 16, Rge 24, W4M And
 SW 4, All 5, NE 6, Ptn NW4
 In Twp 17, Rge 24, W4M



LAND USE DISTRICTS MAP
 Land Use Bylaw No. 1437-15, April 27, 2015
 (Amended To And Including Bylaw No. 1508-22)

- Residential R-1
- Manufactured Home R-2
- Country Residential R-3
- Multi-Unit Residential R-4
- Retail / Commercial C-1
- Highway Commercial C-2
- Industrial I-1
- Transitional Agriculture TA
- Public P-1
- Direct Control DC
- Airport AP

- Town Boundary
- 300m Waste Transfer Site Buffer
- 300m Former Landfill Buffer